

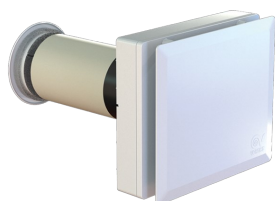
Technical Data Sheet

CODE 12441

VORT HRW 30 MONO EVO WIFI



Decentralised heat recovery units



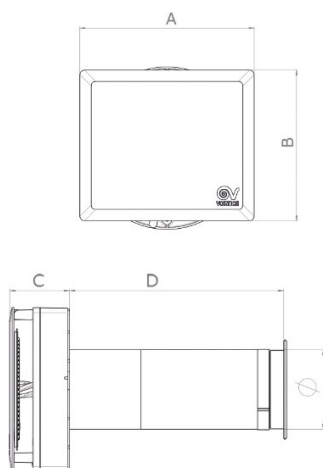
Certifications



TECHNICAL AND PERFORMANCE DATA

| | | | |
|---|-----------------|---|------|
| Absorbed Current max (A) | 0,04 | Max delivery at max speed (m ³ /h) | 38 |
| Absorbed Power max (W) | 5 | Maximum thermal efficiency (%) | 90 |
| Frequency (Hz) | 50-60 | Potenza sonora Lw [dB (A)] - max vel | 66,8 |
| Insulation Class | II ^o | Potenza sonora Lw [dB (A)] - min vel | 36,6 |
| Max ambient temperature for continuous operation (°C) | 30 | Pressione sonora Lp [dB (A)] 3m - med vel | 32,0 |
| Nominal Diameter (mm) | 100 | Pressure - 1st speed (mmH2O) | 1 |
| Voltage (V) | 220-240 | Pressure - 1st speed (Pa) | 10 |
| Weight (Kg) | 3,10 | Pressure max - max speed (mmH2O) | 13,7 |
| Delivery 1st speed (l/s) | 1,7 | Pressure max - max speed (Pa) | 130 |
| Delivery 1st speed (m ³ /h) | 6 | Sound power Lw [dB(A)] - mid speed | 49,5 |
| Max delivery at max speed (l/s) | 10,5 | Sound pressure level Lp [dB (A)] 3m - max speed | 49,2 |
| | | Sound pressure level Lp [dB (A)] 3m - min speed | 19,1 |

DIMENSIONS



| | |
|-----------------|-----|
| Diametro Ø (mm) | 97 |
| Size A (mm) | 231 |
| Size B (mm) | 200 |
| Size C (mm) | 73 |
| Size D (mm) | 260 |

PER INFORMAZIONI:

Servizio al Cliente: tel +39 02 90699395 premendo 1 dopo messaggio registrato (consulenza su prodotti e impianti)

Pre & Post Vendita: fax +39 02 90699302

Email prevendita: prevendita@vortice-italy.com

Technical Data Sheet

CODE 12441

VORT HRW 30 MONO EVO WIFI



Decentralised heat recovery units

DESCRIPTION

ACCESSORIES



MWS D.100

Code 21883



WA Ø 100

Code 21884



Kit FTR ISO

**Coarse 20/30%
(G2/G3)d.98X10**

Code 21891



TUBO PVC

**D.100 L=700
(HRW 30)**

Code 21879

PER INFORMAZIONI:

Servizio al Cliente: tel +39 02 90699395 premendo 1 dopo messaggio registrato (consulenza su prodotti e impianti)

Pre & Post Vendita: fax +39 02 90699302

Email prevendita: prevendita@vortice-italy.com