

# Technical Data Sheet

CODE 61721

## NORDIK INTERNATIONAL PLUS 140/56



Ceiling fans



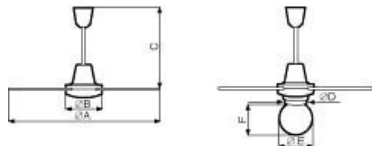
### Certifications



### TECHNICAL AND PERFORMANCE DATA

|                          |         |                                       |        |
|--------------------------|---------|---------------------------------------|--------|
| Fan diameter             | 140     | giri_minuto                           | 231    |
| Frequency (Hz)           | 50      | Max airflow (m <sup>3</sup> /h)       | 13500  |
| Insulation class         | I°      | Max airflow (m <sup>3</sup> /min)     | 225,00 |
| Max absorbed current (A) | 0,33    | Max flow speed (m/s)                  | 1,69   |
| Max absorbed power (W)   | 70      | RPM                                   | 231    |
| Voltage (V)              | 220-240 | Service value (m <sup>3</sup> /min)/W | 3,214  |
| Weight (Kg)              | 7,00    | Sound power Lw [dB(A)]                | 52,6   |

### DIMENSIONS



|             |       |
|-------------|-------|
| Size A (mm) | ∅     |
|             | 1422  |
| Size B (mm) | ∅ 230 |
| Size C (mm) | 495   |

#### PER INFORMAZIONI:

Servizio al Cliente: tel +39 02 90699395 premendo 1 dopo messaggio registrato (consulenza su prodotti e impianti)

Pre & Post Vendita: fax +39 02 90699302

Email prevendita: prevendita@vortice-italy.com

# Technical Data Sheet

CODE 61721

## NORDIK INTERNATIONAL PLUS 140/56



Ceiling fans

### DESCRIPTION

- Nominal diameter of blades 1400 mm
- Top and bottom motor covers moulded from heat-resistant and UV-resistant thermoplastic resin (ABS), colour white
- Wiring connections at end of ceiling rod concealed by domes moulded from impact- and UV-resistant PP, colour white.
- Single phase start capacitor motor with external rotor, and shaft turning in ball bearings.
- Maximum air flow: 13,500 m<sup>3</sup>/h.
- 3 sheet steel blades powder coated with scratch-resistant polyester, colour white.
- Steel ceiling rod with polyester powder coated finish, colour white, length 375 mm.
- Bag of accessories containing nuts and bolts required for assembly of blades, ceiling hook and rubber anti-vibration washer.
- Factory-prepared to accept Light Kit (optional), suitable for lamp rated 150W max with E27 screw fitting, or equivalent energy-saving lamp with E27 screw fitting.
- Speed selectable by way of control units (optional)

### ACCESSORIES



#### SCNR5 UNIF.X NK SOFFITTO

Code 12955



#### SCNRL5 UNIF. X NK SOFFITTO

Code 12957



#### KIT SCB5 (TRASF.5 V.)

Code 22483



#### TELENORDIK 5T

Code 22387



#### PLUS LIGHT KIT (KIT LUCE)

Code 22415



#### C 2.5 (COMANDO EL. 2.5 A)

Code 12967



#### SC 503 B

Code 12801



#### SC 503 N

Code 12802



#### SC EXT B

Code 12803



#### SCI503

Code 22461



#### PSC-W

Code 22462

#### PER INFORMAZIONI:

Servizio al Cliente: tel +39 02 90699395 premendo 1 dopo messaggio registrato (consulenza su prodotti e impianti)

Pre & Post Vendita: fax +39 02 90699302

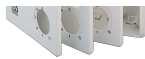
Email prevendita: [prevendita@vortice-italy.com](mailto:prevendita@vortice-italy.com)





**PSC-B**

Code 22463



**KIT SCB  
(TRASF.E.C.)**

Code 22481



**ASTA NK I 200  
BIANCA**

Code 22032



**ASTA NK I 250  
BIANCA**

Code 22033



**ASTA NK I 350  
BIANCA**

Code 22042



**ASTA NK I 500  
BIANCA**

Code 22051



**ASTA NK I 750  
BIANCA**

Code 22074



**ASTA NK I 1000  
BIANCA**

Code 22077