

Technical Data Sheet

CODE 12453

VORTICE 230/9" ARI

Wall/window axial fans



Certifications



IMQ



CE



IMQ Performance



C Tick Mark



EAC

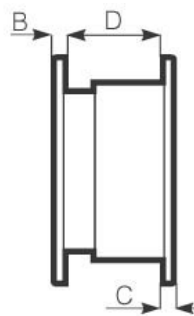
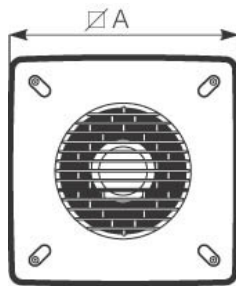


G-Mark

TECHNICAL AND PERFORMANCE DATA

Frequency (Hz)	50-60	Voltage (V)	220-240
Inlet	Automatico	Weight (Kg)	3,88
Insulation class	II°	Max airflow - extract (l/s)	125
IP	X4	Max airflow - extract (m3/h)	450
Max absorbed current (A)	0,13	Max airflow - intake (l/s)	83,3
Max absorbed power (W)	26	Max airflow - intake (m3/h)	300
Max absorbed Power at 60 Hz (W)	26	Max airflow (m ³ /h)	450
Max ambient temperature for continuous operation (°C)	50	RPM	810
Max room temperature for continuous operation at 60 Hz (°C)	50	Rpm - exhaust	810
Ø Discharge hole (mm)	230	Rpm - supply	1080
		Sound pressure Lp [dB (A)] at 3 m	35,7

DIMENSIONS



Ø hole through the wall	335/340
Size A (mm)	400
Size B (mm)	10
Size C (mm)	11
Size D (mm)	180

PER INFORMAZIONI:

Servizio al Cliente: tel +39 02 90699395 premendo 1 dopo messaggio registrato (consulenza su prodotti e impianti)

Pre & Post Vendita: fax +39 02 90699302

Email prevendita: prevendita@vortice-italy.com

Technical Data Sheet

CODE 12453

VORTICE 230/9" ARI

Wall/window axial fans



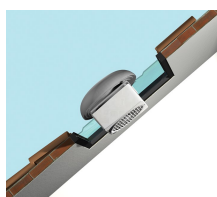
DESCRIPTION

- Model designed for installation recessed into wall.
- Reversibility function (intake or extraction).
- Automatic shutter: prevents the entry of cold air and bad smells when the appliance is switched off.
- Material: UV resistant ABS plastic (prevents ageing caused by exposure to sunlight)
- Nominal diameter 230 mm.
- Motor protected against thermal overload, with shaft turning in self-lubricating bushings, coupled to screw type thermoplastic impeller with wing profile blades.
- IMQ SAFETY and IMQ PERFORMANCE certifications.

CURVES

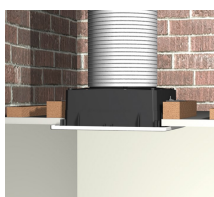
□

ACCESSORIES



KIT TE 230/9" **(TORRETTA)**

Code 13002



KIT SO **(SOFFITTO)**

Code 13012



KIT ML 230/9" **(MURO-LARGO)**

Code 13016



KIT TC 230/9" **(TETTO CON** **CONDOTTO)**

Code 13028



CR5N

Code 12941



CR5

Code 12943



CREN

Code 12944



C PIR

Code 12998



C TIMER

Code 12999

PER INFORMAZIONI:

Servizio al Cliente: tel +39 02 90699395 premendo 1 dopo messaggio registrato (consulenza su prodotti e impianti)

Pre & Post Vendita: fax +39 02 90699302

Email prevendita: prevendita@vortice-italy.com