

[←](#) BACK

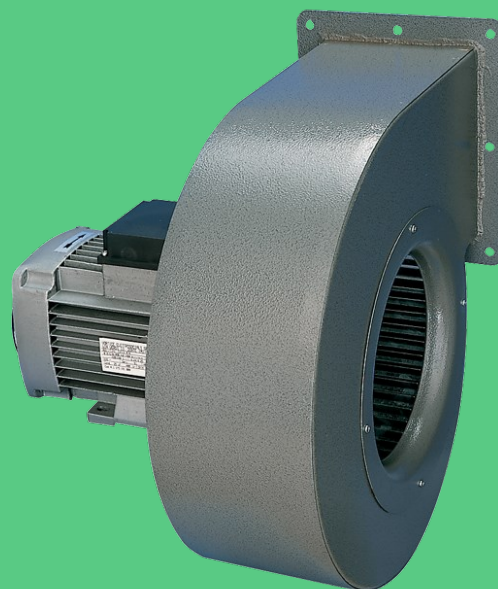
CODE 30302

C 10/2 M

Centrifugal fans

- Description
- Certifications
- Technical Data Sheet
- Accessories

DOCUMENTATION

[other images](#) [PRODUCTS](#) > [INDUSTRIAL VENTILATION](#) > [CENTRIFUGAL FANS](#) > [DUCT](#)

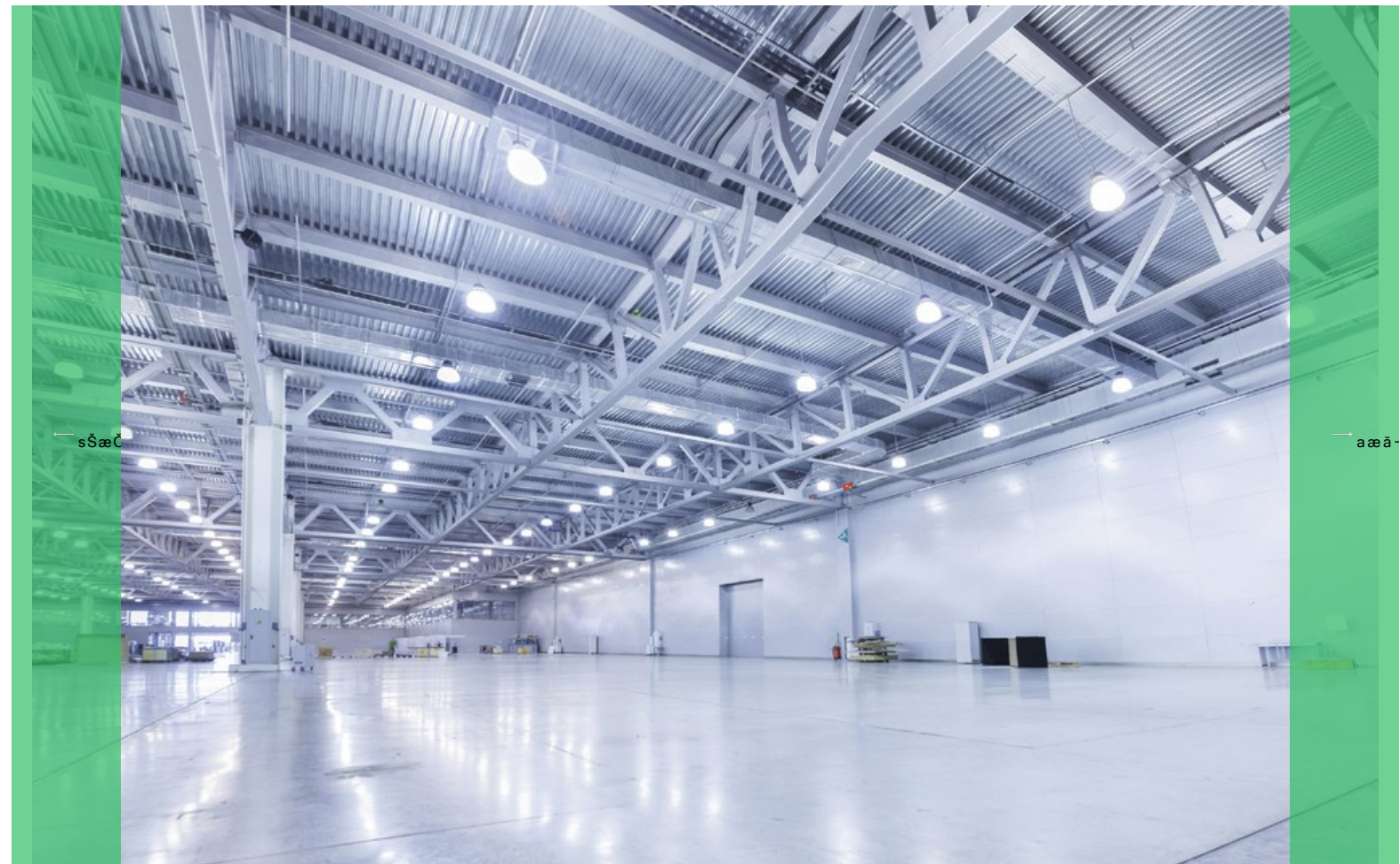
Description

- Frame and scroll: painted pressed steel, with multiple fixing holes configured to allow alignment of the motor in 8 different positions relative to the outlet port.
- Single phase AC motor with 1 operating speed and shaft turning in ball bearings.
- Centrifugal impeller with forward-curved blades of zinc-coated steel, dynamically balanced (UNI ISO 1940, Point 1 – Class 6.3).
- Maximum air flow: 300 m³/h.

[Read full description](#)

Certifications

 CE EAC



Technical Data Sheet

Technical and performance data Dimensions

Absorbed Current max (A)	0,45	Voltage (V)	230
Absorbed Power max (W)	100	Weight (Kg)	2,7
Frequency (Hz)	50	Delivery max (l/s)	83,3
Insulation Class	I°	Delivery max (m ³ /h)	300
Max ambient temperature for continuous operation (°C)	50	Pressure max (mmH2O)	25
Motor IP protection	55	Pressure max (Pa)	245
Number of Poles	2	RPM	2800
		Sound Pressure level Lp [dB (A)] 3m	55,5

Interested?

If you are interested in this product, contact us or locate your nearest Vortice dealer.

[CONTACT US](#)

Documentation

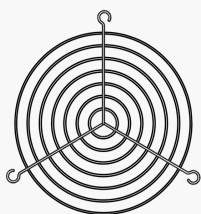
You can see all the documentation relating to this product: price list, information booklet and wiring diagram.

[DOCUMENTATION](#)



Accessories

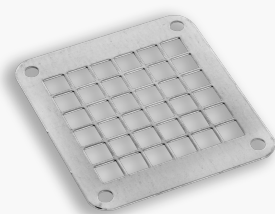
Discover accessories related to the product



C-GA 10 (GRIGLIA PROT.ASPIRAZIONE)

- Intake port protection grille for use when the unit is mounted with reach.

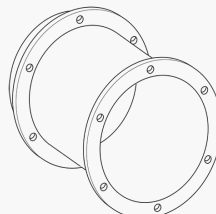
[Go to data sheet](#) →



C-GM 10 (GRIGLIA PROT.MANDATA)

- Outlet port protection grille for use when the unit is mounted within reach.

[Go to data sheet](#) →



C-RA 10 (RACCORDO DI ASPIRAZIONE)

- Flanged fitting for intake tube.
- Useful when inserting a gasket or an intermediate anti-vibration joint.

[Go to data sheet](#) →



IREM INVERTER 4 M

Single-phase speed controller

[Go to data sheet](#) →

[Find distributor](#) →

[Register for the Newsletter](#) →

[Contact us](#) →

[Work with us](#) [Technical area](#) [Privacy](#) [Sitemap](#)

VORTICE Group worldwide

[International](#) [Italy](#) [United Kingdom](#) [China](#) [Latam](#) [Casals](#) [Vortice Industrial](#)

© 2020 Vortice - All Rights Reserved - P.iva IT04474410968

Websolute