

Cookies help us to provide our services. By using these services, you accept our use of cookies. [Info](#)

Industrial ventilation

To change the air in warehouses, gyms, hospitals and large size rooms.

INDUSTRIAL VENTILATION ↓

CATEGORY ↓

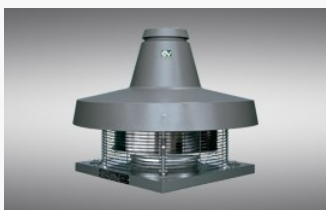
TPOLOGY ↓

SEARCH BY CODE



-- SELECT -- VOLTAGE ↓

20
PRODUCTS



TORRETTE TR-E

Centrifugal roof fans with horizontal discharge

Centrifugal roof fans with air flow rates between 1100 m³/h and 18000 m³/h. The structure comprises a base of square geometry incorporating the inlet port, a cylindrical safety grille, motor and terminal box, impeller and protective cap.

[SHOW PRODUCTS](#)

20
PRODUCTS



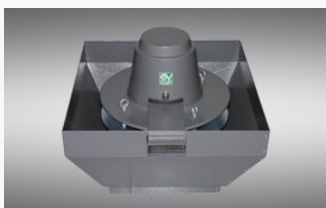
TORRETTE TR-ED

Centrifugal roof fans with horizontal discharge for hot fumes extraction

Centrifugal roof fans with air flow rates between 890 m³/h and 18000 m³/h suitable for extracting hot fumes at up to 400 °C for 120 minutes. The structure comprises a base of square geometry incorporating the inlet port, a cylindrical safety grille, motor and terminal box, impeller and protective cap.

[SHOW PRODUCTS](#)

20
PRODUCTS



TORRETTE TR ED-V

Centrifugal roof fans with vertical discharge for hot fumes extraction

Suitable for application in residential and industrial environments, for factories, hospitals, nightclubs, offices, theatres, apartment blocks, gyms, restaurants, etc... Easy to install on top of all roofs. Vertical air extraction with polyester painted, galvanised steel reinforcements.

[SHOW PRODUCTS](#)

20
PRODUCTS



TORRETTE TR E-V

Centrifugal roof fans with vertical discharge
Vertical exhaust centrifugal roof fans for air flow rates between 1100 m³/h and 18000 m³/h. The structure comprises a base of square geometry incorporating the inlet port, a cylindrical safety grille, motor complete with terminal box, impeller, protective cap, and baffles positioned to divert the extracted air upwards.

[SHOW PRODUCTS](#)

9
PRODUCTS



C-ATEX

Centrifugal fans for installation in potentially explosive areas

Industrial centrifugal fans suitable for use in environments characterized by potentially explosive atmospheres created due to the presence of gas or dust identifiable with Group II (according to Atex classification).

[SHOW PRODUCTS](#)

21
PRODUCTS



VORTICENT C E

Centrifugal fans

Centrifugal roof fans characterized by high efficiency, with air flow rates between 244 m³/h and 6800 m³/h. Construction featuring scroll and inlet port fashioned in one piece, plus motor complete with wiring box, and impeller.

[SHOW PRODUCTS](#)

16
PRODUCTS



VORTICEL MP

Medium-pressure plate axial fans

Wall-mounting axial flow fans characterized by high efficiency and low noise emissions, with diameters between 250 and 600 mm and air flows from 1,150 m³/h to 14,500 m³/h. Structure: mounting panel of square outline incorporating ventilation port, safety grille, and at the rear, electric motor complete with wiring box, coupled to axial flow impeller.

[SHOW PRODUCTS](#)

14
PRODUCTS



E-ATEX

Axial plate-mounted fans for installation in potentially explosive areas

Industrial axial fans of diameter between 250 and 600 mm and air flows from 1,000 m³/h to 6,900 m³/h, suitable for use in environments characterized by potentially explosive atmospheres created due to the presence of gas or dust identifiable with Group II (according to Atex classification).

[SHOW PRODUCTS](#)

19
PRODUCTS



VORTICEL A-E

Compact plate axial fans

Wall-mounting axial flow fans characterized by high efficiency and low noise emissions, with diameters between 250 and 630 mm and air flows from 765 m³/h to 2640 m³/h. Structure: mounting panel of square outline incorporating ventilation port, safety grille, and at the rear, electric motor complete with wiring box, coupled to axial flow impeller.

[SHOW PRODUCTS](#)

19
PRODUCTS



VORTICEL E

Low-pressure plate axial fans

Wall-mounting axial flow ventilation units characterized by high efficiency and low noise emissions, with diameters between 250 and 600 mm and air flows from 1,000 m³/h to 7,700 m³/h. Structure: mounting panel of square outline incorporating ventilation port, safety grille, and at the rear, electric motor complete with wiring box, coupled to axial flow impeller.

[SHOW PRODUCTS](#)

10
PRODUCTS



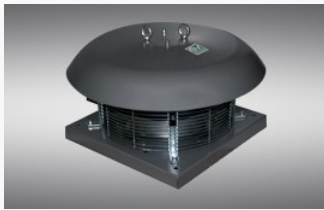
VORTICEL MPC-E

Medium-pressure long cased axial fans

Axial flow fans for in-line installation characterized by high efficiency and low noise emissions, with diameters between 250 and 400 mm and air flows from 1,180 m³/h to 5,200 m³/h. Construction featuring two drilled flange sections of cylindrical geometry, bolted together and designed for connection to ducts of corresponding diameter, also the motor mounting, the motor itself (complete with wiring box), and the impeller.

[SHOW PRODUCTS](#)

15
PRODUCTS



TORRETTE RF-EU

Centrifugal roof fans with horizontal discharge

Centrifugal roof fans with air flow rates between 1350 m³/h and 14500 m³/h. The structure comprises a base of square geometry incorporating the inlet port, cylindrical safety grille, motor-fan unit, wiring box and protective cap.

[SHOW PRODUCTS](#)

8
PRODUCTS



VORT JET A

Impulse jet fans (axial)

Unidirectional or reversible (R) axial fans with impellers of nominal diameter of 315, 355 and 400 mm, with die cast aluminium airfoil blades, studied to optimise aerodynamic efficiency, reduce turbulences and thus contain consumption and noise emissions. Double speed, three-phase induction motors with shafts mounted on ball bearings (Dahlander). Galvanized steel sheet oval end silencers, to contain clearance. Designed to guarantee correct laminar flow of the air handled. Rock wool sound-proofing lining, density 80 kg/m³.

[SHOW PRODUCTS](#)

2
PRODUCTS



VORT JET R

Induction jet fans (radial)

Induction centrifugal jet fans. 2 models, different in size, performance and functions. Construction in galvanized steel sheet, characterised by reduced thickness (height varies from 295 mm to 335 mm, depending on the model), to allow installation in premises with limited height. Centrifugal impeller with backward-curved blades, with nominal diameter of 560 and 630 mm, depending on

[SHOW PRODUCTS](#)

the model.

[Find distributor](#)



[Register for the Newsletter](#)

[Contact us](#)



[Work with us](#) [Technical area](#) [Privacy](#) [Sitemap](#)

VORTICE Group worldwide

[International](#) [Italy](#) [United Kingdom](#) [China](#) [Latam](#) [Casals](#) [Vortice Industrial](#)

© 2020 Vortice - All Rights Reserved - P.iva IT04474410968

 Websolute