

Cookies help us to provide our services. By using these services, you accept our use of cookies. [Info](#)

[←](#) BACK

CODE 15135

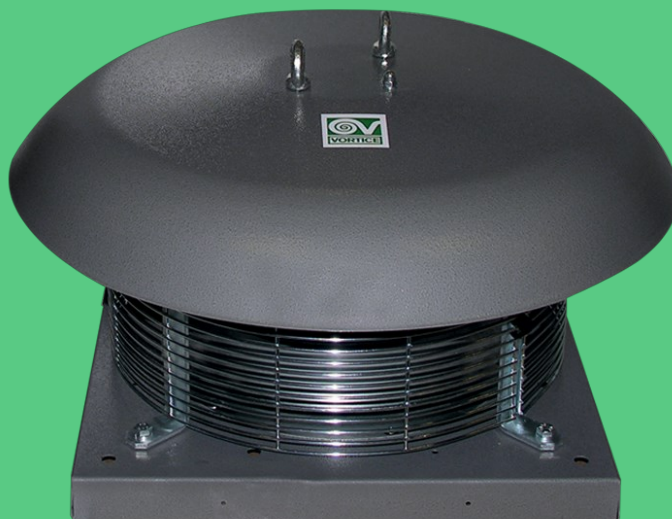
# RF-EU T100 8P

Centrifugal roof fans with horizontal discharge

- [Description](#)
- [Certifications](#)
- [Technical Data Sheet](#)
- [Accessories](#)

DOCUMENTATION

a



1 2

[other images](#) m

[PRODUCTS](#) > [INDUSTRIAL VENTILATION](#) > [ROOF FANS](#) > [ROOF](#)

## Description

- Pressed steel motor cover: pickled and phosphated surface, polyester powder coated and oven baked finish, colour grey, with hammered texture.
- Base: pickled and phosphated surface, polyester powder coated and oven baked finish with hammered texture, colour grey; inlet port: zinc-coated pressed steel.
- Single phase AC motor of external rotor type with thermal overload cutout and shaft turning in ball bearings, insulation class F, coupled to a centrifugal impeller with self-cleaning backward curved blades.
- Electrical connection by way of wiring box with thermoplastic cable gland.

[Read full description](#)

## Certifications



CE

a



EAC

# Technical Data Sheet

Technical and performance data

Energy data

Dimensions

Curves

|   |      |   |       |
|---|------|---|-------|
| Absorbed Current max (A)                              | 4,5  | Number of Poles                                   | 8     |
| Absorbed Power max (W)                                | 2970 | Voltage (V)                                       | 400   |
| Frequency (Hz)  | 50   | Weight (Kg)                                       | 81    |
| Insulation Class                                      | 1°   | Delivery max (l/s)                                | 4444  |
| IP  | 24   | Delivery max (m³/h)                               | 16000 |
| Max ambient temperature for continuous operation (°C) | 60   | Pressure max (mmH2O)                              | 87,0  |
| Motor IP protection                                   | 54   | Pressure max (Pa)                                 | 853   |
| Nominal Diameter (mm)                                 | 500  | RPM   | 1230  |
| Number of Phases (Ph)                                 | 3    | Sound power level Lw [dB(A)]                      | 85,0  |
|   |      | Sound pressure level Lp in free field [dB(A)] 3 m | 64,2  |

## Interested?

If you are interested in this product, contact us or locate your nearest Vortice dealer.

[CONTACT US](#)

## Documentation

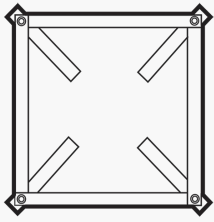
You can see all the documentation relating to this product: price list, information booklet and wiring diagram.

[DOCUMENTATION](#)

[a](#)

## Accessories

Discover accessories related to the product



### TR-CU 70/100 (CONTROTELAIO DI BASE U)

- Installation base counter-frame.

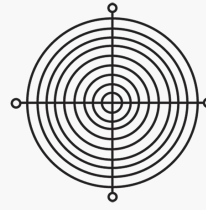
[Go to data sheet](#) **d**



### TR-B 100/150/180/210 6-8P (BOCC. ASPIR.)

- Intake nozzle to fit on intake side for optimizing intake and reducing noise level.

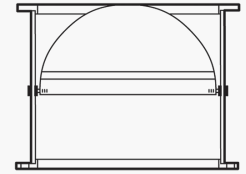
[Go to data sheet](#) **d**



### TR-G 100/150/180/210 6-8P(GRIGLI APROT.)

- Intake port protection grille for use when the unit is mounted within reach.

[Go to data sheet](#) **d**



### TR-S 100/150/180/210 6-8P(SERRANDA GRA.)

- Galvanized sheet-metal gravity backdraught shutter.
- With aluminium shutters and return spring, for preventing air backdraughts or penetration of rain when the unit ...

[Go to data sheet](#) **d**

[Find distributor](#) **d**

[Register for the Newsletter](#) **d**

[Contact us](#) **d**

[Work with us](#) [Technical area](#) [Privacy](#) [Sitemap](#)

Select country:

[International](#) [Italy](#) [United Kingdom](#) [China](#) [Latam](#)

© 2019 Vortice - All Rights Reserved - P.iva IT04474410968

 Websolute