

Cookies help us to provide our services. By using these services, you accept our use of cookies. [Info](#)

[←](#) BACK

CODE 15132

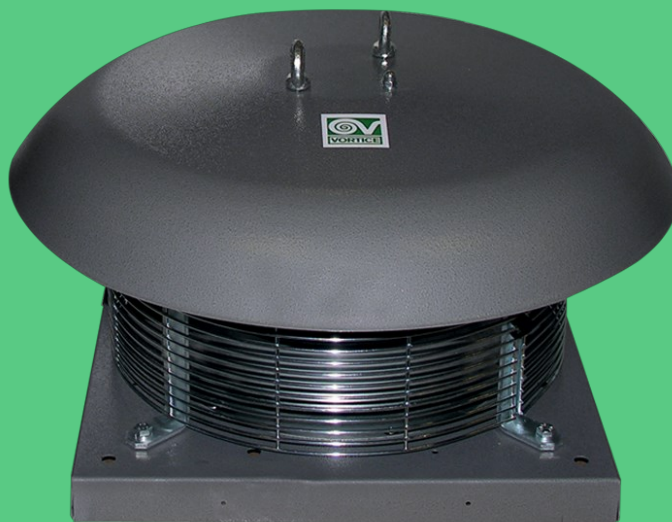
RF-EU T70 6P

Centrifugal roof fans with horizontal discharge

- [Description](#)
- [Certifications](#)
- [Technical Data Sheet](#)
- [Accessories](#)

DOCUMENTATION

1



1 2

[other images](#) [m](#)

[PRODUCTS](#) > [INDUSTRIAL VENTILATION](#) > [ROOF FANS](#) > [ROOF](#)

Description

- Pressed steel motor cover: pickled and phosphated surface, polyester powder coated and oven baked finish, colour grey, with hammered texture.
- Base: pickled and phosphated surface, polyester powder coated and oven baked finish with hammered texture, colour grey; inlet port: zinc-coated pressed steel.
- Single phase AC motor of external rotor type with thermal overload cutout and shaft turning in ball bearings, insulation class F, coupled to a centrifugal impeller with self-cleaning backward curved blades.
- Electrical connection by way of wiring box with thermoplastic cable gland.

[Read full description](#)

Certifications

 CE

[a](#)

 EAC

Technical Data Sheet

Technical and performance data

Energy data

Dimensions

Curves

Absorbed Current max (A)	1,57	Number of Poles	6
Absorbed Power max (W)	712	Voltage (V)	400
Frequency (Hz)	50	Weight (Kg)	57
Insulation Class	I°	Delivery max (l/s)	2250
IP	24	Delivery max (m ³ /h)	8100
Max ambient temperature for continuous operation (°C)	60	Pressure max (mmH2O)	40,7
Min ambient temperature for continuous operation (°C)	-15	Pressure max (Pa)	399
Motor IP protection	54	RPM	900
Nominal Diameter (mm)	400	Sound power level Lw [dB(A)]	64,3
Number of Phases (Ph)	3	Sound pressure level Lp in free field [dB(A)] 3 m	43,8

Interested?

If you are interested in this product, contact us or locate your nearest Vortice dealer.

[CONTACT US](#)

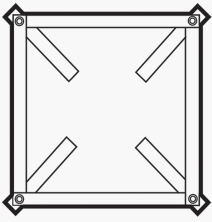
Documentation

You can see all the documentation relating to this product: price list, information booklet and wiring diagram.

[DOCUMENTATION](#)

[a](#)

Accessories



TR-CU 70/100 (CONTROTELAIO DI BASE U)

- Installation base counter-frame.

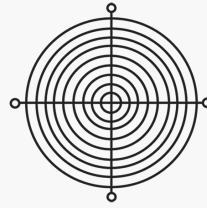
[Go to data sheet](#) **d**



TR-B 100/150/180/210 6-8P (BOCC. ASPIR.)

- Intake nozzle to fit on intake side for optimizing intake and reducing noise level.

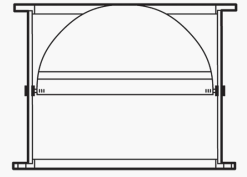
[Go to data sheet](#) **d**



TR-G 100/150/180/210 6-8P (GRIGLI APROT.)

- Intake port protection grille for use when the unit is mounted within reach.

[Go to data sheet](#) **d**



TR-S 100/150/180/210 6-8P (SERRANDA GRA.)

- Galvanized sheet-metal gravity backdraught shutter.
- With aluminium shutters and return spring, for preventing air backdraughts or penetration of rain when the unit ...

[Go to data sheet](#) **d**

[Find distributor](#) **d**

[Register for the Newsletter](#) **d**

[Contact us](#) **d**

[Work with us](#) [Technical area](#) [Privacy](#) [Sitemap](#)

Select country:

[International](#) [Italy](#) [United Kingdom](#) [China](#) [Latam](#)